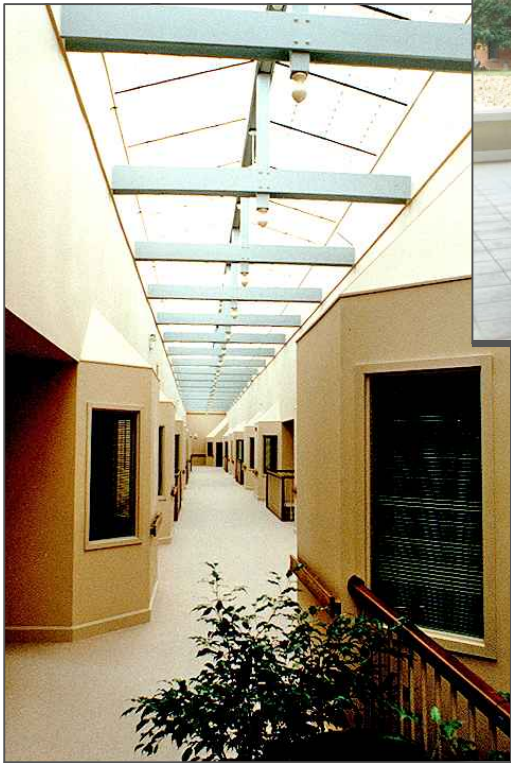




DRIVE THROUGH ENTRY



MEETING ROOM



SECOND FLOOR CORRIDOR

Located on Evansville's north side, this 120-unit complex on Evansville's north side was developed adjacent to the Holiday Medical Building and the Holiday Nursing Home.

The village features private balconies in every apartment, sky-lighted corridors, a dining room with a mahogany ceiling, a large group living room, and a community room with a central fountain. Dining room bay windows project into corridors and break up what is normally designed as a mountainous space.

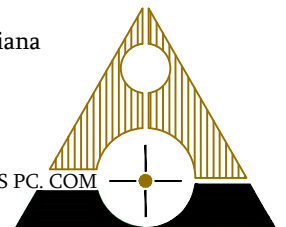
View from the units overlook a courtyard lake. Many of the first floor units have gardens for growing vegetables, herbs, and flowers.

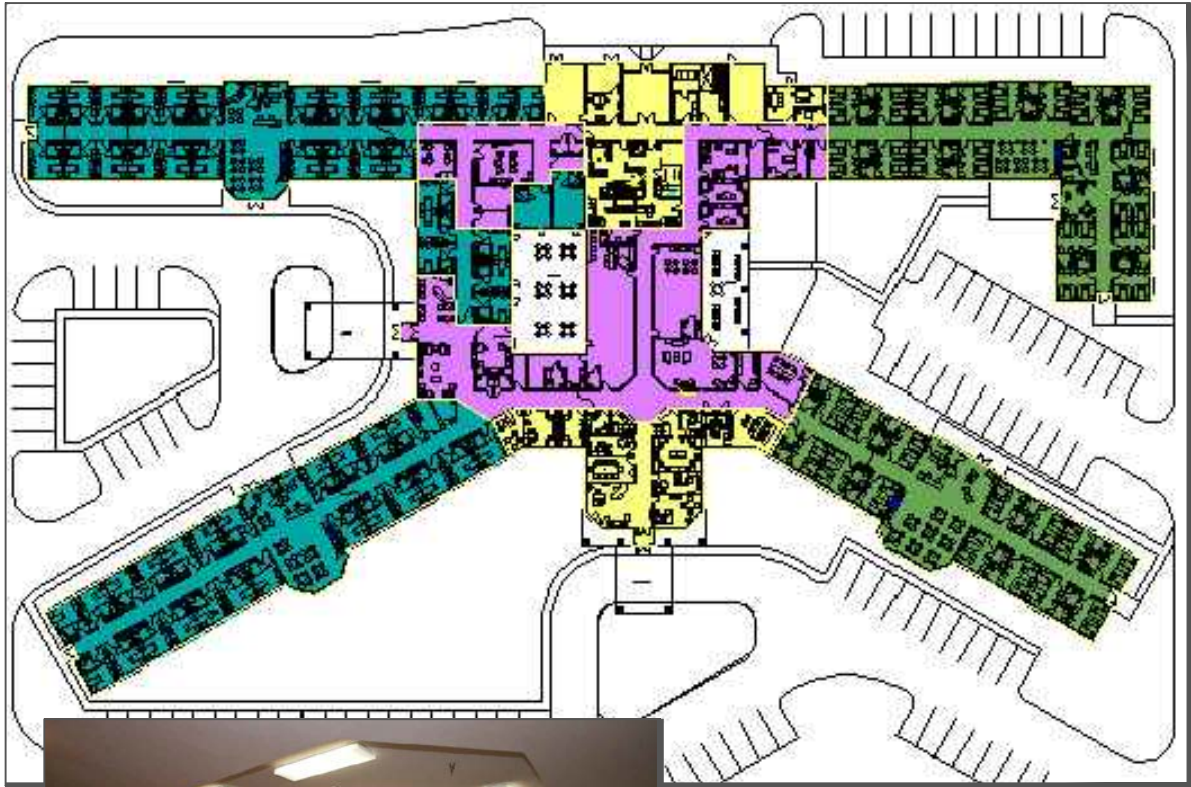
Client: 3D Corporation

Location: Evansville, Indiana

Size: 120 Units

WWW.ARCHITECTURE PLUS PC.COM

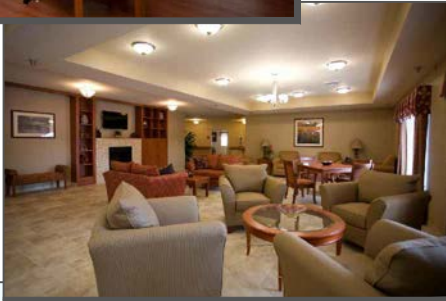




SITE PLAN



DINING



LOUNGE

Our team worked with an architect from Louisville, Kentucky in the design and development of the mechanical, electrical and plumbing systems for this new LTAC (long term acute care) facility located in Westfield, Indiana.

Our design included medical gas for oxygen supply and vacuum systems to each occupant room within the facility.

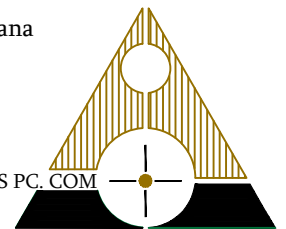


Client: Ramsey Development

Location: Westfield, Indiana

Size: 60,000 square feet

WWW.ARCHITECTURE PLUS PC.COM





RENDERING

Breckinridge Assisted Living



HISTORIC BRECKINRIDGE MURAL

Breckinridge Living Facility contains 20 assisted living units and 24 nursing home rooms.

Located just off State Highway 60, the facility has the ability to double in size on its large lot with a view into neighboring woodlands.

As one enters the facility a wall mural captures your attention and suggests the rich history associated with this region of Kentucky.



LOUNGE

Client: Eidetek, Uniontown, KY

Location: Morganfield, KY

Size: 30,000 square feet

WWW.ARCHITECTURE PLUS PC.COM

